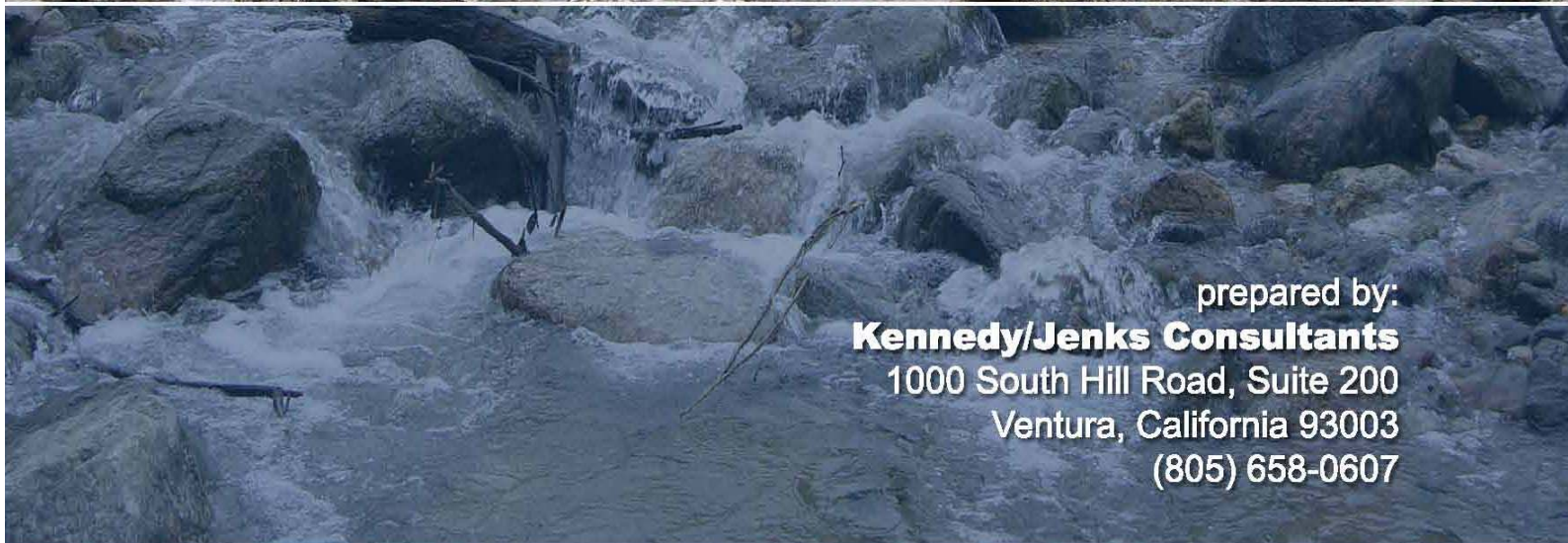
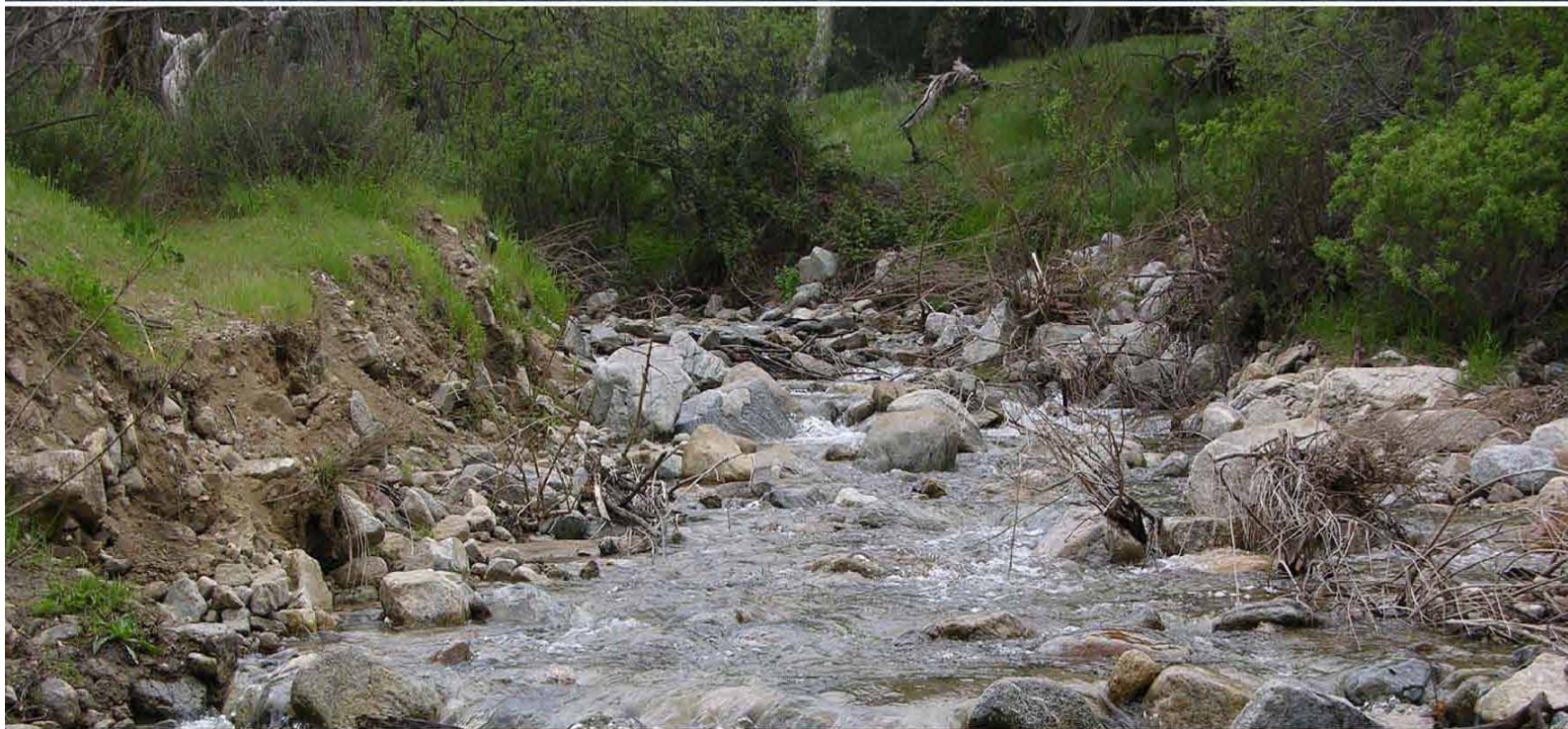


Upper Santa Clara River Integrated Regional Water Management Plan

Adopted July 2008



prepared by:
Kennedy/Jenks Consultants
1000 South Hill Road, Suite 200
Ventura, California 93003
(805) 658-0607

Table of Contents

<i>List of Tables</i>	<i>viii</i>
<i>List of Figures</i>	<i>x</i>
<i>List of Appendices</i>	<i>xi</i>
<i>List of Acronyms</i>	<i>xii</i>
<i>List of Acronyms (cont'd)</i>	<i>xiii</i>
<i>Executive Summary</i>	<i>1</i>
The Region	1
The Regional Water Management Group	5
Stakeholder Involvement	5
Regional Water Issues and Problems.....	6
Plan Objectives	6
Water Management Strategies and Projects	8
Initial Project Sorting.....	8
Secondary Project Evaluation	11
Institutional Structure for Plan Implementation	13
 Section 1: Introduction	 1-1
1.1 Introduction to the Region	1-1
1.1.1 Relationship with Neighboring IRWMPs	1-6
1.2 Purpose of the Upper Santa Clara River Integrated Regional Water Management Plan.....	1-6
1.3 Stakeholder Involvement.....	1-7
1.3.1 Regional Water Management Group	1-8
1.3.2 Stakeholders	1-9
1.3.2.1 Municipal and County Government Agencies.....	1-13
1.3.2.2 Water Suppliers/Wastewater Management/Special Districts	1-13
1.3.2.3 Business Organizations	1-14
1.3.2.4 Recreational and Open Space Entities.....	1-14
1.3.2.5 Regulatory and Resource Agencies - State and Federal.....	1-14
1.3.2.6 Other Stakeholders/Non-Profit Organizations.....	1-14
1.3.3 Ground Rules and Operating Procedures.....	1-14
1.3.3.1 Ground Rules for Participation.....	1-15
1.3.3.2 Operating Procedures.....	1-15
 Section 2: Region Description	 2-1
2.1 Introduction and Overview.....	2-1
2.2 Climate	2-5

Table of Contents (cont'd)

2.3	Land Use	2-7
2.3.1	Land Use Policies	2-8
2.4	Ecological Processes and Environmental Resources	2-11
2.4.1	Sensitive Biological Resources	2-12
2.4.2	Wetland Habitat.....	2-15
2.4.3	Wildlife Corridors.....	2-16
2.4.4	Locally Important Species and Communities	2-17
2.4.5	Significant Ecological Areas.....	2-18
2.5	Social and Cultural Characteristics	2-24
2.5.1	Demographics and Population	2-24
2.5.1.1	Los Angeles County	2-24
2.5.1.2	Santa Clarita Valley	2-24
2.5.1.3	City of Santa Clarita.....	2-25
2.5.1.4	Unincorporated Areas of Watershed.....	2-29
2.5.2	Economic Factors	2-30
2.5.2.1	Los Angeles County.....	2-30
2.5.2.2	Santa Clarita Valley	2-30
2.5.2.3	City of Santa Clarita.....	2-31
2.5.2.4	Unincorporated Areas of Watershed.....	2-31
2.5.3	Disadvantaged Communities	2-31
2.5.4	Social and Cultural Values	2-32
2.6	Water Supply.....	2-33
2.6.1	Groundwater	2-33
2.6.1.1	Acton Valley Groundwater Basin	2-35
2.6.1.2	Agua Dulce Groundwater Basin	2-36
2.6.1.3	Soledad Canyon Alluvial Channel	2-36
2.6.1.4	Santa Clara River Valley East Subbasin.....	2-36
2.6.1.5	Adopted AB 3030 Groundwater Management Plan.....	2-38
2.6.1.6	Available Groundwater Supplies.....	2-40
2.6.1.7	Potential Supply Inconsistency	2-48
2.6.2	Imported Water Supplies.....	2-48
2.6.2.1	Transfers and Exchanges	2-52
2.6.3	Recycled Water.....	2-53
2.6.3.1	Existing Facilities	2-53
2.6.3.2	Planned Recycled Water Improvements and Expansions	2-54
2.6.3.3	Recycled Water Uses	2-55
2.6.3.4	Other Potential Sources of Recycled Water	2-56
2.6.3.5	Summary of Available Source Water Flows.....	2-57
2.6.3.6	Recycled Water Demand.....	2-57
2.6.3.7	Potential Recycled Water Demand.....	2-59
2.6.4	Groundwater Banking	2-59
2.6.4.1	Semitropic Water Banking	2-60

Table of Contents (cont'd)

	2.6.4.2	Rosedale-Rio Bravo Water Storage District Water Banking	2-61
	2.6.5	Other Opportunities.....	2-61
2.7		Summary of Major Water Issues and Problems.....	2-62
2.8		Water Quality	2-62
	2.8.1	Impaired Water Bodies.....	2-62
	2.8.1.1	Section 303(D) List of Water Quality Limited Segments.....	2-64
	2.8.2	Potable Water Quality	2-64
	2.8.3	Surface Water Quality	2-66
	2.8.4	Imported Water Quality	2-70
	2.8.5	Groundwater Quality	2-71
	2.8.5.1	Agua Dulce Groundwater Basin	2-71
	2.8.5.2	Acton Valley Groundwater Basin	2-71
	2.8.5.3	Santa Clara River Valley East Groundwater Subbasin.....	2-72
	2.8.6	Water Quality Impacts on Reliability	2-83
	2.8.6.1	Restoration of Perchlorate Impacted Water Supply	2-83
2.9		Water Demand	2-85
	2.9.1	Projected Demand	2-86
	2.9.2	Comparison to City and County Planning	2-87
	2.9.3	Other Factors Affecting Water Demands	2-88
	2.9.3.1	Weather Effects on Water Usage	2-89
	2.9.3.2	Conservation Effects on Water Usage.....	2-89
2.10		Watershed Flood Management Problems and Issues	2-90
2.11		Major Water Related Infrastructure	2-103
	2.11.1	State Water Project.....	2-103
	2.11.2	Bouquet Reservoir and Los Angeles Aqueduct	2-104
	2.11.3	Metropolitan Water District Foothill Feeder.....	2-104
	2.11.4	Purveyor Water Infrastructure	2-105
Section 3:		Plan Objectives.....	3-1
	3.1	Objective Development	3-1
	3.2	Regional Objectives	3-4
	3.2.1	Reduce Water Demand.....	3-4
	3.2.2	Improve Operational Efficiency	3-5
	3.2.3	Increase Water Supply.....	3-5
	3.2.4	Improve Water Quality	3-6
	3.2.5	Practice Resource Stewardship.....	3-8
	3.3	Strategies	3-9
Section 4:		Water Management Strategies Used to Meet Plan Objectives.....	4-1

Table of Contents (cont'd)

4.1	Overview	4-1
4.2	California Water Plan Water Management Strategies.....	4-1
4.2.1	Reduce Water Demand.....	4-4
4.2.1.1	Agricultural Water Use Efficiency.....	4-4
4.2.1.2	Urban Water Use Efficiency.....	4-4
4.2.2	Improve Operational Efficiency	4-4
4.2.2.1	Conveyance	4-4
4.2.2.2	System Re-operation	4-4
4.2.2.3	Water Transfers	4-4
4.2.3	Increase Water Supply.....	4-5
4.2.3.1	Conjunctive Management and Groundwater Storage	4-5
4.2.3.2	Desalination – Brackish/Seawater	4-5
4.2.3.3	Precipitation Enhancement.....	4-5
4.2.3.4	Recycled Municipal Water	4-5
4.2.3.5	Surface Storage – CALFED.....	4-5
4.2.3.6	Surface Storage – Regional/Local	4-5
4.2.4	Improve Water Quality	4-6
4.2.4.1	Drinking Water Treatment and Distribution.....	4-6
4.2.4.2	Groundwater/Aquifer Remediation.....	4-6
4.2.4.3	Matching Quality to Use.....	4-6
4.2.4.4	Pollution Prevention	4-6
4.2.4.5	Urban Runoff Management	4-6
4.2.5	Promote Resource Stewardship	4-7
4.2.5.1	Agricultural Lands Stewardship	4-7
4.2.5.2	Economic Incentives (Loans, Grants, Water Pricing).....	4-7
4.2.5.3	Ecosystem Restoration	4-7
4.2.5.4	Floodplain Management	4-7
4.2.5.5	Recharge Areas Protection.....	4-8
4.2.5.6	Urban Land Use Management.....	4-8
4.2.5.7	Water-Dependent Recreation	4-8
4.2.5.8	Watershed Management.....	4-8
4.3	Water Management Strategies Adopted by Stakeholders	4-8
4.3.1	Reduce Water Demand.....	4-9
4.3.1.1	Agricultural Water Use Efficiency.....	4-10
4.3.1.2	Urban Water Use Efficiency.....	4-10
4.3.2	Improve Operational Efficiency	4-12
4.3.2.1	Conveyance	4-12
4.3.2.2	System Re-operation	4-12
4.3.3	Increase Water Supply.....	4-13
4.3.3.1	Conjunctive Management and Groundwater Storage	4-13
4.3.3.2	Desalination	4-13
4.3.3.3	Precipitation Enhancement.....	4-14

Table of Contents (cont'd)

4.3.3.4	Recycled Municipal Water	4-14
4.3.3.5	Water Transfers	4-14
4.3.3.6	Surface Storage- CALFED.....	4-15
4.3.3.7	Surface Storage- Regional/Local	4-15
4.3.4	Improve Water Quality	4-15
4.3.4.1	Drinking Water Treatment and Distribution.....	4-15
4.3.4.2	Groundwater/Aquifer Remediation.....	4-16
4.3.4.3	Matching Quality to Use.....	4-16
4.3.4.4	Pollution Prevention	4-17
4.3.4.5	Urban Runoff Management	4-21
4.3.5	Promote Resource Stewardship	4-22
4.3.5.1	Agricultural Lands Stewardship	4-23
4.3.5.2	Economic Incentives	4-23
4.3.5.3	Ecosystem Restoration.....	4-24
4.3.5.4	Floodplain Management	4-24
4.3.5.5	Recharge Areas Protection.....	4-25
4.3.5.6	Urban Land Use Management.....	4-25
4.3.5.7	Water-Dependent Recreation	4-26
4.3.5.8	Watershed Management.....	4-27
4.4	Call for Projects.....	4-27
Section 5:	Project Priorities and Implementation.....	5-1
5.1	Project Prioritization Process	5-1
5.1.1	Initial Project Sorting/Step 1 Prioritization	5-1
5.1.2	Refinement/Step 2 Prioritization.....	5-5
5.1.3	Selected Plan Projects	5-6
5.2	Integration of Water Management Strategies.....	5-7
5.3	Impacts and Benefits of Plan Implementation	5-8
5.3.1	Benefits of Plan Implementation	5-8
5.3.2	Plan Beneficiaries	5-10
5.3.3	Interregional Benefits	5-10
5.4	Impacts of Plan Implementation	5-10
5.5	Institutional Structure for Plan Implementation.....	5-12
5.5.1	Roles and Responsibilities of Each Group Involved	5-14
5.5.1.1	Stakeholder Group Roles and Responsibilities	5-14
5.5.1.2	Participating Stakeholders	5-14
5.5.1.3	Local Project Sponsors' Roles and Responsibilities	5-15
5.5.2	Successor Regional Water Management Group.....	5-16
5.5.2.1	Successor Regional Water Management Group Structure, Roles, and Responsibilities	5-16
5.5.2.2	RWMG Chair Roles and Responsibilities	5-18
5.5.2.3	RWMG Vice-Chair Roles and Responsibilities	5-18

Table of Contents (cont'd)

	5.5.2.4	Grantee Roles and Responsibilities.....	5-18
	5.5.3	Future Formalized Governance Structure.....	5-19
	5.5.3.1	IRWMP Term	5-19
	5.5.3.2	IRWMP Adoption	5-20
	5.5.3.3	Formalized Governance Structure Document and Term	5-20
Section 6:		Finance Plan	6-1
	6.1	Potential Funding Options	6-1
	6.2	Local.....	6-1
	6.2.1	Capital Improvements Program Funding (Revenue Bonds, Certificates of Participation)	6-1
	6.2.2	Property Tax Assessment (Assessed Valuation)	6-1
	6.2.3	User Fees.....	6-2
	6.3	State.....	6-2
	6.3.1	Proposition 84	6-2
	6.3.1.1	Integrated Regional Water Management Planning.....	6-2
	6.3.1.2	Department of Public Health - Emergency and Urgent Water Protection	6-3
	6.3.1.3	Department of Public Health - Small Community Drinking Water Infrastructure.....	6-3
	6.3.1.4	Department of Public Health – Prevention of Groundwater Contamination	6-3
	6.3.1.5	State Water Resources Control Board – Storm Water Grant Program	6-3
	6.3.2	Proposition 1E.....	6-4
	6.3.3	Proposition 50	6-4
	6.3.3.1	Department of Water Resources – Water Use Efficiency Grants.....	6-4
	6.3.3.2	Department of Public Health – Water Security	6-4
	6.3.3.3	Department of Public Health - Small Community Water System Facilities	6-5
	6.3.3.4	Department of Public Health - Water System Monitoring Facilities	6-5
	6.3.3.5	Department of Public Health - Contaminant Treatment and Removal	6-5
	6.3.3.6	Department of Public Health - Drinking Water Source Protection	6-5
	6.3.3.7	Department of Public Health – Byproduct Treatment Facilities.....	6-6
	6.3.3.8	Department of Public Health – Contaminant Removal.....	6-6

Table of Contents (cont'd)

	6.3.3.9	Department of Public Health – UV and Ozone Disinfection	6-6
	6.3.4	Other State Funding.....	6-6
	6.3.4.1	State Revolving Fund	6-6
	6.3.4.2	State Water Resources Control Board – Federal 319 Program	6-6
	6.3.4.3	State Water Resources Control Board – Water Recycling Funding Program	6-7
	6.3.4.4	Department of Water Resources – Local Groundwater Assistance Program	6-7
	6.3.4.5	Pending Legislation	6-7
6.4	Federal		6-8
	6.4.1	Environmental Protection Agency, Source Reduction Assistance	6-8
	6.4.2	Environmental Protection Agency, Wetlands Program Development Grants.....	6-8
	6.4.3	National Park Service, Rivers, Trails, and Conservation Assistance (RTCA) Program	6-8
	6.4.4	Natural Resources Conservation Service, Watershed Protection and Flood Prevention Grant	6-9
	6.4.5	US Department of Agriculture, Water and Waste Disposal Program	6-9
	6.4.6	US Bureau of Reclamation, Challenge Grant Program.....	6-9
	6.4.7	US Fish and Wildlife Service, North American Wetlands Conservation Act Grant	6-10
	6.4.8	Federal Legislation.....	6-10
6.5	Selected Plan Project Cost Estimates.....		6-10
6.6	Grant Funding Package		6-10

Section 7:	Data Management, Technical Analyses, and Plan Performance	7-1
7.1	Data Management and Technical Analyses for Plan Preparation.....	7-1
	7.1.1 Existing Information and Reports	7-2
	7.1.1.1 Water Resource Management Reports	7-2
	7.1.1.2 Facilities Plans and Master Plans	7-3
	7.1.1.3 City, County, and Federal Land Use Plans.....	7-4
	7.1.1.4 Resource Conservation Plans	7-5
	7.1.1.5 Water Quality Plans	7-7
	7.1.2 Monitoring and Data Management.....	7-7
	7.1.3 Monitoring	7-7
	7.1.3.1 Groundwater Monitoring	7-7
	7.1.3.2 Water Quality Monitoring	7-9
	7.1.3.3 Surface Water Flow Monitoring.....	7-9
	7.1.4 Data Reporting.....	7-10

Table of Contents (cont'd)

	7.1.4.1	Data Reporting as Part of the City of Santa Clarita Municipal National Pollutant Discharge Elimination System Permit.....	7-10
	7.1.4.2	Data Reporting as Part of County of Los Angeles Municipal Storm Water Permit.....	7-10
	7.1.4.3	Data Reporting as Part of the Memorandum of Understanding Regarding Urban Water Conservation in California.....	7-11
	7.1.5	Identified Data Gaps	7-11
7.2		Data Management and Monitoring During Plan Implementation.....	7-12
	7.2.1	Plan Performance	7-12
	7.2.2	Data Collection.....	7-13
	7.2.3	Data Reporting.....	7-13
Section 8:		Coordination and Outreach.....	8-1
	8.1	Coordination with Local Land Use Planning.....	8-1
		8.1.1 Linkages Between the IRWMP and Local Planning Documents	8-1
		8.1.2 Participation by Local Planning Entities	8-2
	8.2	Coordination with State and Federal Agencies	8-2
		8.2.1 Participation in IRWMP Development.....	8-2
		8.2.2 Participation in IRWMP Implementation.....	8-3
	8.3	Disadvantaged Community Outreach	8-4
		8.3.1 Environmental Justice.....	8-5
	8.4	Public Outreach.....	8-5
Section 9:		References.....	9-1

List of Tables

ES-1	Upper Santa Clara River IRWMP Objectives, Definitions and Measurements
ES-2	Upper Santa Clara River Candidate Projects Rated “High” in Initial Sorting
1.3-1	Roles and Responsibilities of the Regional Water Management Group
1.3-2	Stakeholders Groups
2.5-1	Adjusted Santa Clarita Valleywide General Plan
2.5-2	Demographics of Outlying Areas of Watershed
2.5-3	Job Sectors, Unemployment Rates, and Total Populations of Outlying Areas of Watershed
2.6-1	Projected Water Supplies in the Region
2.6-2	Availability of Groundwater for the Region

Table of Contents (cont'd)

2.6-3	Historical Groundwater Production by the Retail Water Purveyors
2.6-4	Projected Groundwater Production
2.6-5	Active Municipal Groundwater Source Capacity — Alluvial Aquifer Wells
2.6-6	Active Municipal Groundwater Source Capacity — Saugus Formation Wells
2.6-7	Historical Total SWP Deliveries to Purveyors
2.6-8	Demand Projections Provided to Wholesale Supplier
2.6-9	Wholesaler Supply Reliability
2.6-10	Reclaimed Water Capacity
2.6-11	Use Of Native Water vs. Foreign Water
2.6-12	Discharge of Reclaimed Water
2.6-13	Summary of Available Recycled Water Source Flows
2.6-14	Actual Recycled Water Uses
2.6-15	Potential Recycled Water Uses in Region
2.6-16	Projected Potential Future Use of Recycled Water in Service Area
2.6-17	Recommended Schedule for Water Banking Capacity
2.6-18	Future Reliability Enhancement Programs
2.8-1	2006 303(D) List of Impaired Water Bodies – Upper Santa Clara River Watershed
2.8-2	Surface Water Quality Summary
2.9-1	Historical Accounts and Deliveries by Retail Purveyors
2.9-2	Projected Water Demands
2.9-3	Projected Household Water Use
2.9-4	Comparison of Purveyor and OVOV Demand Projections
3.1-1	Upper Santa Clara River IRWMP Objectives, Definitions and Measurements
4.3-1	Upper Santa Clara River Region Water Management Strategies and California Water Plan Resource Management Strategies (appears at the end of Section 4)
4.3-2	Allowed Uses of Recycled Water
4.3-3	Upper Santa Clara River Reaches
5.1-1	Prioritization Step 1
6.1-1	Possible Funding Opportunities
7.1-1	Groundwater Operating Plan for the Santa Clarita Valley

Table of Contents (cont'd)

List of Figures

- ES-1 Upper Santa Clara Upper Watershed Hydraulic Features
- ES-2 Project Prioritization Process
- 1.1-1 Upper Santa Clara River Watershed Hydraulic Features
- 1.1-2 Upper Santa Clara Watershed/IRWMP Region
- 2.1-1 Santa Clara River Reach Boundaries
- 2.2-1 Annual Precipitation
- 2.4-1 Upper Santa Clara River Watershed Significant Ecological Areas
- 2.5-1 Census Tracts in the Upper Santa Clara River Watershed
- 2.8-1a Summary of TDS Concentrations Over Time
- 2.8-1b Summary of Sulfate Concentrations Over Time
- 2.8-1c Summary of Nitrate Concentrations Over Time
- 2.8-1d Summary of Chloride Concentrations Over Time
- 2.8-2 Forecasted Two-Year Groundwater Capture Zones for Active Alluvial Production Wells Located Closest to the Whittaker-Bermite Property
- 2.8-3 Forecasted Two-Year Groundwater Capture Zones for Active Saugus Production Wells Located Closest to the Whittaker-Bermite Property
- 2.9-1 Historical Annual Total Demand
- 2.9-2 Weather Effects on Water Usage
- 2.10-1 Drainage and Major Water Related Infrastructure Upper Santa Clara River Watershed
- 2.10-2 Historical Runoff for the Santa Clara River
- 4.1-1 Relationship Between Objectives, Strategies, and Projects
- 4.1-2 Twenty Four Water Management Strategies of the California Water Plan
- 4.3-1 City of Santa Clarita Trail System
- 5.1-1 Project Prioritization Process

Table of Contents (cont'd)

List of Appendices

- A Memorandum of Understanding
- B Stakeholder Meeting Materials
- C Candidate Plan Projects
- D Community Outreach Materials
- E Detailed Descriptions of all Candidate Projects (provided on enclosed CD)
- F Summary of Comments Received on April 2008 Public Review Draft IRWMP
- G Authorizing Resolutions and Letters of Support

Table of Contents (cont'd)

List of Acronyms

AF	acre-feet	NCWD	Newhall County Water District
AFY	acre-feet per year	NLF	Newhall Land and Farming Company
AMSL	above mean sea level	NPDES	National Pollutant Discharge Elimination System
AVEK	Antelope Valley-East Kern Water Agency	NRCS	Natural Resource Conservation Service
AWWA	American Water Works Association	OEHHA	Office of Environmental Health Hazard Assessment
BLM	Bureau of Land Management	OVOV	"One Valley, One Vision"
BMPs	Best Management Practices	PAH	Polycyclic Aromatic Hydrocarbon
Caltrans	California Department of Transportation	PCB	Polychlorinated Biphenyls
CAPP	Conservation Area Protection Plan	ppb	parts per billion
CCR	Consumer Confidence Report	RMC	San Gabriel and Lower Los Angeles Rivers and Mountains Conservancy
CDFG	California Department of Fish and Game	RO	Reverse Osmosis
CEQA	California Environmental Quality Act	RTCA	Rivers, Trails, and Conservation Assistance (National Park Service grant funding program)
cfs	cubic feet per second	RTP	Regional Transportation Plan
CII	commercial, industrial, institutional	RVIPS	Rio Vista Intake Pump Station
CLWA	Castaic Lake Water Agency	RVWTP	Rio Vista Water Treatment Plant
CUWCC	California Urban Water Conservation Council	RWVG	Regional Water Management Group
CWA	Clean Water Act	RWQCB	Regional Water Quality Control Board
CWC	California Water Code	SCE	Southern California Edison
DBPs	disinfection by-products	SCML	South Coast Missing Linkages Project
DDE	Dichlorodiphenyldichloroethylene	SCADA	supervisory control and data acquisition
DDT	Dichloro-Diphenyl-Trichloroethane	SCAG	Southern California Association of Governments
DPH	California Department of Public Health (formerly the Department of Health Services)	SCE	Southern California Edison
DSA	dimensionally stable anodes	SCML	South Coast Missing Linkages
DTSC	California Department of Toxic Substances Control	SCOPE	Santa Clarita Organization for Planning and the Environment
DWR	California Department of Water Resources	SCREMP	Santa Clara River Enhancement and Management Plan
ESFP	Earl Schmidt Filtration Plant	SCV	Santa Clarita Valley
ESIPS	Earl Schmidt Intake Pump Station	SCVSD	Santa Clarita Valley Sanitation District of Los Angeles County
EWMP	efficient water management practices	SCWD	Santa Clarita Water Division of Castaic Lake Water Agency
FY	fiscal year	SDWA	Safe Water Drinking Act
gpcpd	gallons per capita per day	SEA	Significant Ecological Area
gpd/ft	gallons per day per foot	SMMC	Santa Monica Mountains Conservancy
gpm	gallons per minute	SOI	Sphere of Influence
GWMP	groundwater management plan	SRWS	Self-Generating Water Softeners
IBI	Index of Biological Integrity	SWAMP	Surface Water Ambient Monitoring Program
IPS	Intake Pump Station	SWP	State Water Project
IRWMP	Integrated Regional Water Management Plan	SWPPP	Storm Water Pollution Prevention Plan
KCWA	Kern County Water Agency	SWRCB	State Water Resources Control Board
kW	kilowatt	TDS	total dissolved solids
LACDPW	Los Angeles County Department of Public Works	TH	total hardness
LACFCD	Los Angeles County Flood Control District		
LACWWD	Los Angeles County Waterworks District		
LAFCO	Local Agency Formation Commission		
MCL	Maximum Contaminant Levels		
mgd	million gallons per day		
mg/L	milligrams per liter		
MHI	median household income		
MOU	Memorandum of Understanding		
MRCA	Mountains Recreation Conservation Authority		
MWD	Metropolitan Water District of Southern California		
NCDC	National Climatic Data Center		

Table of Contents (cont'd)

List of Acronyms (cont'd)

TMDL	Total Maximum Daily Load
TOC	total organic carbon
US EPA	US Environmental Protection Agency
US ACE	US Army Corps of Engineers
US FWS	US Fish and Wildlife Service
UWCD	United Water Conservation District
UWMP	Urban Water Management Plan
VCRCD	Ventura County Resource Conservation District
VCWPD	Ventura County Watershed Protection District
VWC	Valencia Water Company
WCVC	Watersheds Coalition of Ventura County
WRDA	Water Resources Development Act
WRP	Water Reclamation Plant
WTP	Water Treatment Plant

This Page Intentionally Left Blank.